

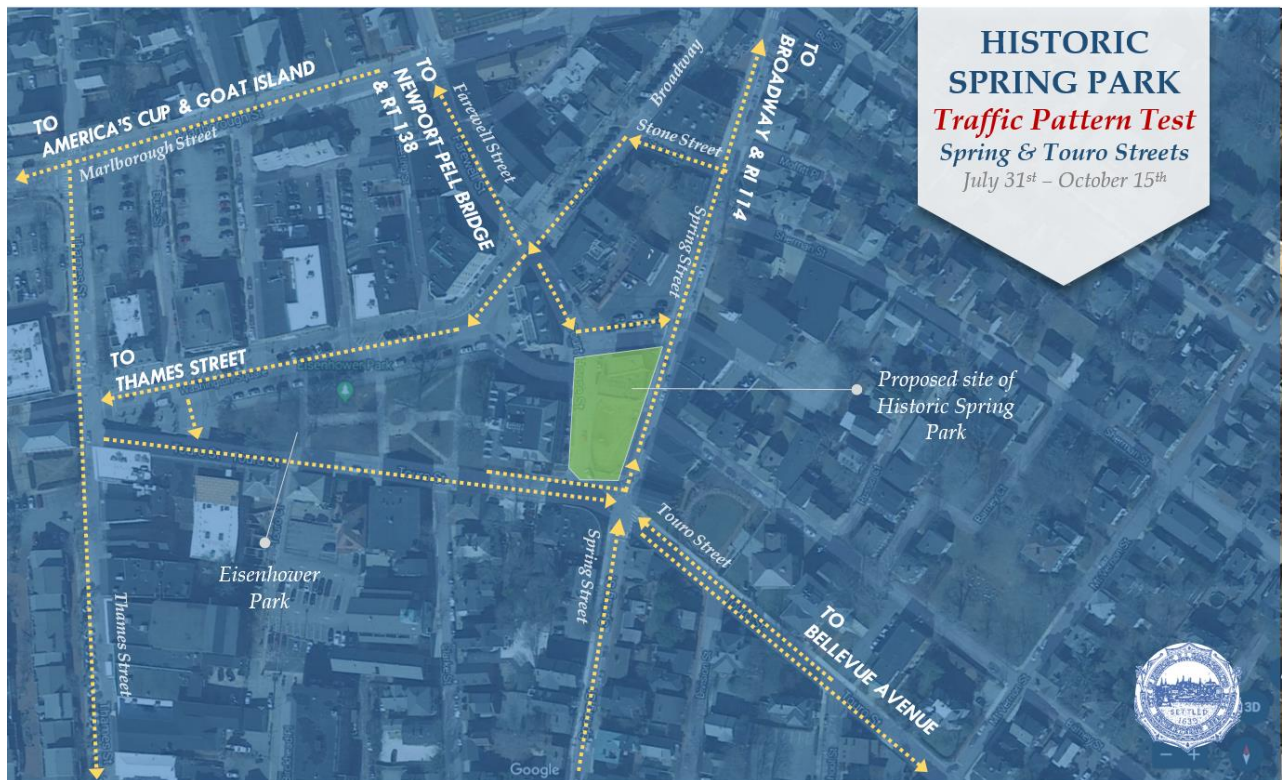
Historic Spring Park

TRAFFIC PATTERN TEST

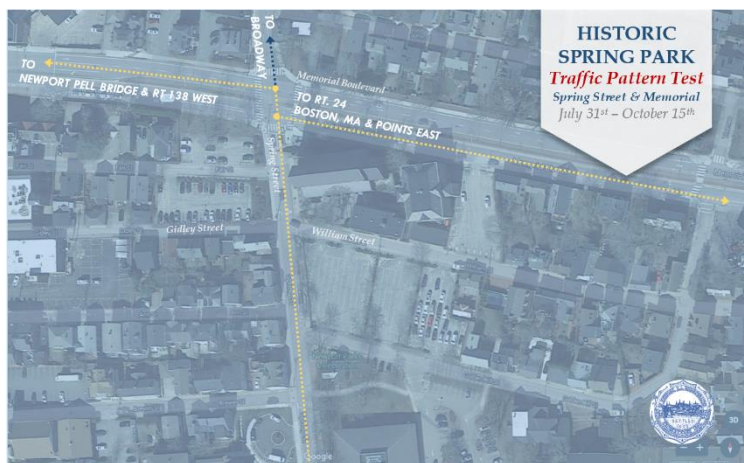
JULY 31ST - OCTOBER 15TH

SPRING & TOURO STREETS

- Courthouse Street to be closed to vehicular traffic
- Stone Street converted to one-way road
- New dedicated left-turn lane on Spring Street
- Parking restricted on Spring Street north of Touro Street



Motorists are encouraged to use Memorial Boulevard and America's Cup Avenue to access the Newport Pell Bridge.



FROM SPRING & MEMORIAL BOULEVARD

- Motorists traveling over the Newport Pell Bridge are advised to use America's Cup Avenue.
- Those traveling to RT 24 should use Memorial Boulevard east.



BELLEVUE AVE. & MEMORIAL BLVD.

- Motorists traveling over the Newport Pell Bridge are advised to use America's Cup Avenue. Those traveling to RT 24 should use Memorial Boulevard east.

To offer feedback or share to your opinion about the proposed traffic pattern, please visit www.CityofNewport.com/SpringPark